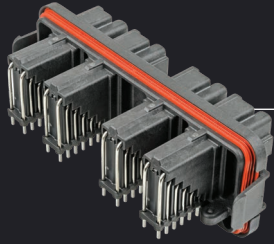

Specialty



Specialty



PCB Headers **80**



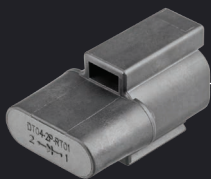
Bussing Hubs **83**



Bussed Receptacles **86**



Sealed Bus Bars **88**



Diodes & Resistors **89**



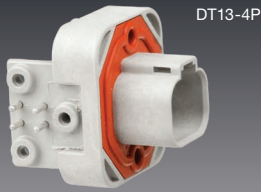
CAN **90**



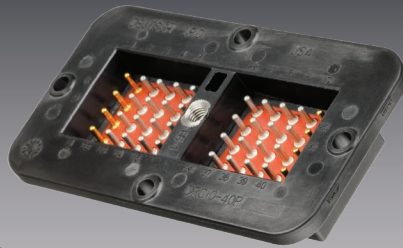
HD30 Breakaway **94**

Specialty

PCB Headers



DT13-4P



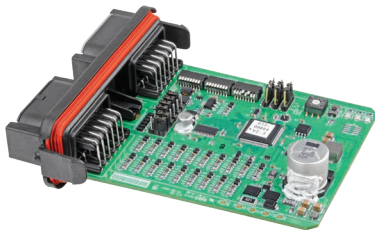
DRC10-40P



DTM13-12PA-12PB-R008

- Reliable and easy to use 'terminate to Printed Circuit Board' connectors.
- Rectangular, thermoplastic design.
- Available in the DT, DTM and DRC ranges.
- Wide range of pin counts from 4 to 48.
- Moulded-in contacts – no need for potting or epoxy sealants.

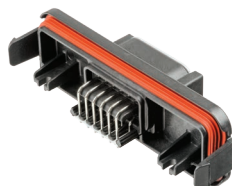
Housing :	Thermoplastic
Seal :	Silicone Rubber
Contact Size :	DT & DRC Series 16
	DTM Series 20
Shock :	50G
Vibration :	20G rms 10 – 2000Hz
Operating Temperature :	-55°C to 125°C



For DTM Series accessories see page 27



DTM13-12PA-12PB-R008



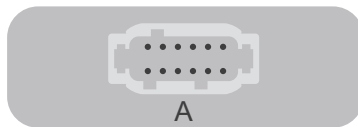
DTM13-12PA-R008

EEC-325X4B-E016 with DTM13-12PA-R008



12 x size 20
A Keying

12 x size 20
B Keying



12 x size 20
A Keying



EEC-325X4B



EEC-325X4B-E016

PCB Headers – DTM Series

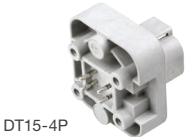
Part No.	Circuits	Style	Mating Plug
DTM13-12PA-12PB-R008	2 x 12	90°	DTM06-12SA & DTM06-12SB
DTM13-12PA-R008	12	90°	DTM06-12SA
EEC-325X4B	Enclosure – Black		
EEC-325X4B-E016	Enclosure – Amber translucent		



DT13-4P



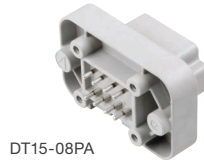
DT13-12PA



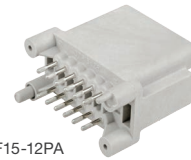
DT15-4P



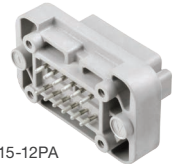
DT15-6P



DT15-08PA



DTF15-12PA



DT15-12PA



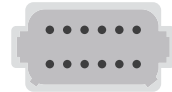
4 x size 16



6 x size 16



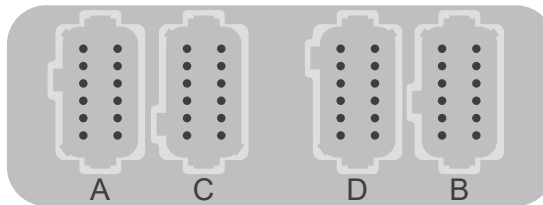
8 x size 16
A Keying



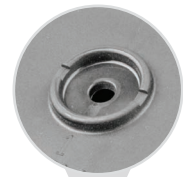
12 x size 16
A Keying



DT13-48PABCD-R015



12 x size 16 A Keying 12 x size 16 C Keying 12 x size 16 D Keying 12 x size 16 B Keying



Vent/breather hole



EEC-5X650A

PCB Headers – DT Series

Part No.	Circuits	Style	Mating Plug
DT13-4P	4	90° Flange	DT06-4S
DT15-4P	4	Straight Flange	DT06-4S
DT15-6P	6	Straight Flange	DT06-6S
DT15-08PA	8	Straight Flange	DT06-08SA
DT13-12PA	12	90° Flange	DT06-12SA
DTF15-12PA	12	Straight Flangless	DT06-12SA
DT15-12PA	12	Straight Flange	DT06-12SA
DT13-48PABCD-R015	4 x 12	90°	DT06-12SA, DT06-12SC, DT06-12SD, DT06-12SB
EEC-5X650A	Enclosure suiting DT13-48PABCD-R015 – Black. Features vent/breather hole		

For DT Series accessories see page 16



Specialty



DRC13-40PA



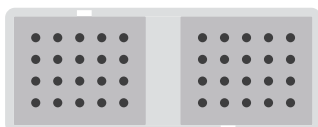
DRC10-24PA



DRC23-24PA



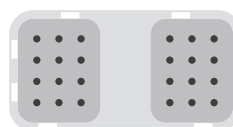
DRC10-40P



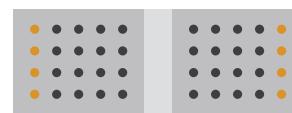
40 x size 16
A Keying



24 x size 16
A Keying



24 x size 20
A Keying



40 x size 16

PCB Headers – DRC Series

Part No.	Circuits	Style	Mating Plug	Notes
DRC13-40PA	40	90°	DRC18-40SA	
DRC10-24PA	24	Straight	DRC16-24SA	
DRC23-24PA	24	90°	DRC26-24SA	
DRC10-40P	40	Straight	DRC16-40S	Outside contact columns gold-plated

For DRC Series accessories see page 77

- Designed and manufactured by IONNIC, using genuine TE DEUTSCH components.
- Compact, efficient design.
- Environmentally sealed.
- Epoxy filled ABS housing.
- J1939 models available in kits with mating connectors plus 120 Ohm resistor plug.
- Made in Australia.

NEW



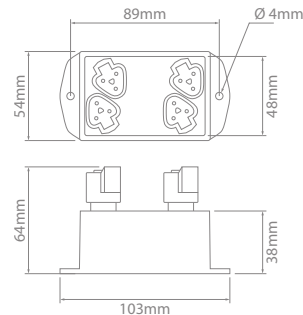
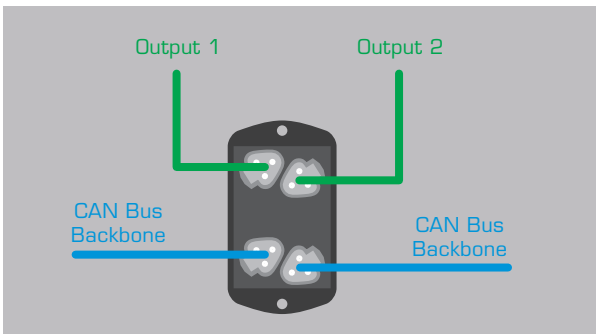
CONNKIT-3X8



CONNKIT-6

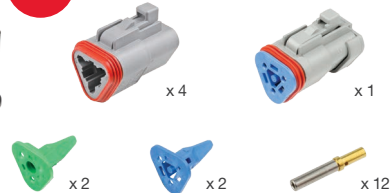


Housing : ABS
 Connector : Thermoplastic
 Operating Temperature : -40°C to 85°C



NEW

Supplied with
 TE DEUTSCH 120 Ohm
 Resistor Plug
 (DT06-3S-P006)



CONNKIT-4JUNCTION



CONNKIT-4

Bussing Hubs – J1939 – 2 Branch

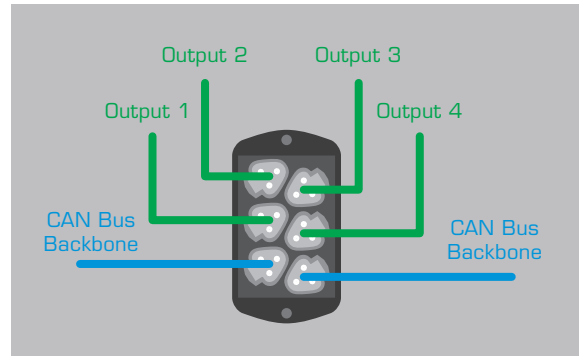
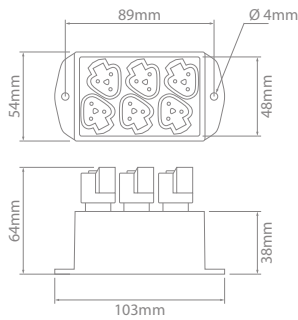
Part No. **CONNKIT-4JUNCTION** **NEW**
 Description CAN bus hub kit – supplied with mating connectors + 120 Ohm resistor plug

CONNKIT-4
 CAN bus hub only

- Kit Contents:
- 1 x CAN Bus 2 Branch Hub (CONNKIT-4)
 - 4 x Plug – DT Series – 3 Circuit (DT06-3S-C015)
 - 2 x Wedgelock Green (W3S-P012)
 - 2 x Wedgelock Blue (W3S-1939-P012)
 - 12 x Contact Gold-Plated (0462-201-1631)
 - 1 x 120 Ohm Resistor Plug (DT06-3S-P006)



Specialty



Bussing Hubs – J1939 – 4 Branch

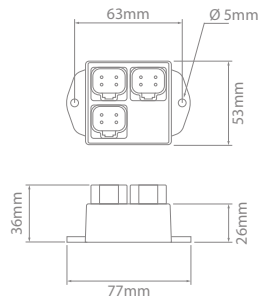
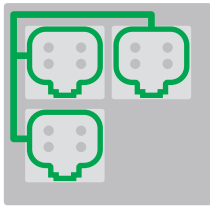
Part No. **CONNKIT-6JUNCTION** **NEW**

Description CAN bus hub kit – supplied with mating connectors + 120 Ohm resistor plug

CONNKIT-6

CAN bus hub only

- Kit Contents:
- 1 x CAN Bus 4 Branch Hub (CONNKIT-6)
 - 6 x Plug – DT Series – 3 Circuit (DT06-3S-C015)
 - 4 x Wedgelock Green (W3S-P012)
 - 2 x Wedgelock Blue (W3S-1939-P012)
 - 18 x Contact Gold-Plated (0462-201-1631)
 - 1 x 120 Ohm Resistor Plug (DT06-3S-P006)

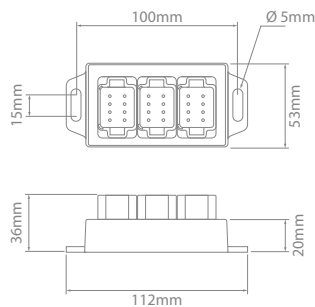
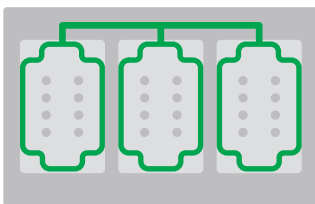


NEW

3 x TE DEUTSCH
4 circuit receptacles
(DT04-4P)



CONNKIT-3X4

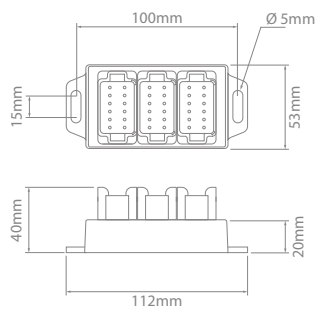
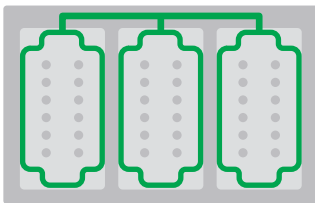


NEW

3 x TE DEUTSCH
8 circuit receptacles
(DT04-08PA)



CONNKIT-3X8



NEW

3 x TE DEUTSCH
12 circuit receptacles
(DT04-12PA)

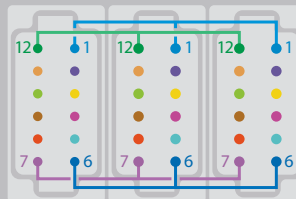


CONNKIT-3X12

Bussed Circuits

All pins are bussed to their corresponding numbers across each connector housed in the Bussing Hub.

This applies to all three Bussing Hubs.



Bussing Hubs **NEW**

Part No.	Description	Mating Components
CONNKIT-3X4	3 x 4 Bussed circuit	3 x DT06-4S, 3 x W4S
CONNKIT-3X8	3 x 8 Bussed circuit	3 x DT06-08SA, 3 x W8S
CONNKIT-3X12	3 x 12 Bussed circuit	3 x DT06-12SA, 3 x W12S

All pins are bussed to their corresponding numbers.

Current Rating per circuit: 10A





DT04-4P-EP13

DT04-08PB-P028



DT04-6P-EP14



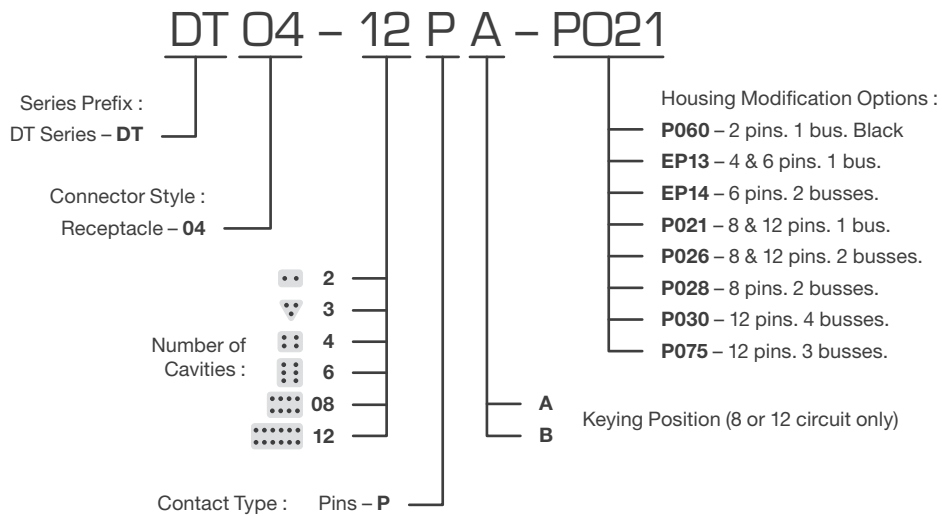
DT04-12PB-P030



- Designed for use in heavy-duty applications where multiple circuits require a common electrical pathway.
- Environmentally sealed – IP68, IP6K9K, when installed to manufacturer’s specifications.
- Integrated bus bars with standard TE DEUTSCH contacts.
- Mates with standard DT Series plugs.
- Available in multiple bussing configurations using standard size 16 contacts.

Housing :	Thermoplastic
Seal :	Silicone Rubber
Wedglock :	Thermoplastic
Bus Plating :	Nickel
Shock :	50G
Vibration :	20G rms 10 – 2000Hz
Approvals :	20mm Flame Test per Standard UL-94
Ingress Protection :	IP68, IP6K9K
Operating Temperature :	-55°C to 125°C

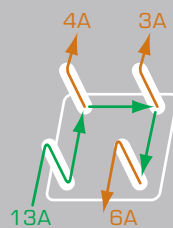
Part Numbering System



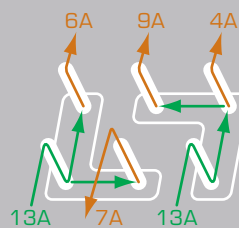
Maximum Current Rating

The maximum current rating is the total amount of current for the entire bus. Current can be distributed in many combinations, but cannot exceed 13A per contact. A total of 13A can be pulled into one pin which is then split between the remaining pins going out. No more than 13A can go through any single pin.

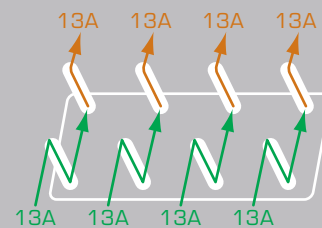
Bussing Examples



DT04-4P-EP13
1 four pin bus



DT04-6P-EP14
2 three pin busses



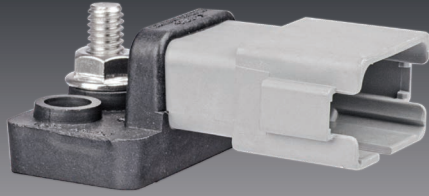
DT04-08PA-P021
1 eight pin bus. 52A output (max)



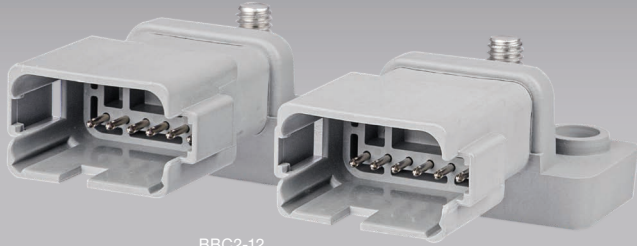
Bussed Receptacles

	Total Pins	Max. Current Rating	Colour	Keying	Part No.	Mating Plug
	2	2 Pin Bus = 13A	Black	—	DT04-2P-P060	DT06-2S
	4	4 Pin Bus = 26A	Black	—	DT04-4P-EP13	DT06-4S
	6	6 Pin Bus = 39A	Black	—	DT04-6P-EP13	DT06-6S
	6	3 Pin Bus = 13A 3 Pin Bus = 13A	Black	—	DT04-6P-EP14	DT06-6S
	8	8 Pin Bus = 52A	Grey Black	A B	DT04-08PA-P021 DT04-08PB-P021	DT06-08SA DT06-08SB
	8	4 Pin Bus = 26A 4 Pin Bus = 26A	Grey Black	A B	DT04-08PA-P026 DT04-08PB-P026	DT06-08SA DT06-08SB
	8	3 Pin Bus = 13A 5 Pin Bus = 26A	Grey Black	A B	DT04-08PA-P028 DT04-08PB-P028	DT06-08SA DT06-08SB
	12	12 Pin Bus = 78A	Grey Black	A B	DT04-12PA-P021 DT04-12PB-P021	DT06-12SA DT06-12SB
	12	6 Pin Bus = 39A 6 Pin Bus = 39A	Grey Black	A B	DT04-12PA-P026 DT04-12PB-P026	DT06-12SA DT06-12SB
	12	3 Pin Bus = 13A 3 Pin Bus = 13A 3 Pin Bus = 13A 3 Pin Bus = 13A	Grey Black	A B	DT04-12PA-P030 DT04-12PB-P030	DT06-12SA DT06-12SB
	12	4 Pin Bus = 26A 4 Pin Bus = 26A 4 Pin Bus = 26A	Grey	A	DT04-12PA-P075	DT06-12SA





BBC-12



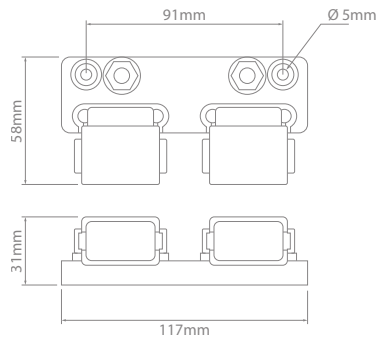
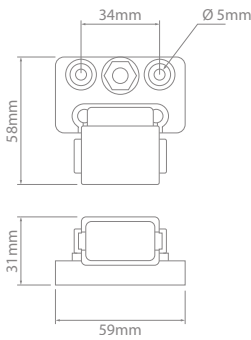
BBC2-12

Made in North America IP68 IP6K9K

- Constructed using genuine TE DEUTSCH connectors.
- Encapsulated, plug & play design.
- Environmentally sealed connectors – IP68, IP6K9K, when installed to manufacturer's specifications.
- Ignition protection – SAE J1171.
- Compact size.
- Quick & easy install compared to traditional bus bar systems.
- Maintenance free design.
- Made in North America.

Bus :
Base :
Studs :
Ingress Protection :
Approvals :

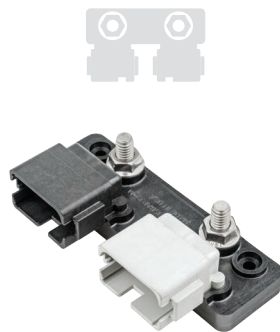
C1100 Electrolytic Copper
RETPU – Injection Moulded
5/16–18" Stainless Steel
IP68, IP6K9K
SAE J1171



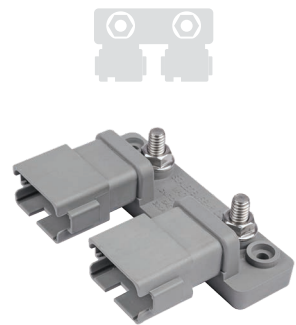
BBC-12



BBC-24



BB2-12



BBC2-12

Sealed Bus Bars

Part No.	BBC-12	BBC-24	BB2-12	BBC2-12
Type	Single	Double	Split	Split
Current Rating @ 48V	150A	300A	2 x 150A	2 x 150A
Mating Connector	DT06-12SA	2 x DT06-12SA	DT06-12SA & DT06-12SB	2 x DT06-12SA

- Useful anywhere there is a need to regulate power or protect a device against potential power surges or transient voltages.
- Easily retrofitted.
- Resistors to suit DT and DTM series.
- Environmentally sealed connectors – IP68, IP6K9K, when installed to manufacturer's specifications.
- Latched mating.
- Receptacle mounting clips found on page 15.

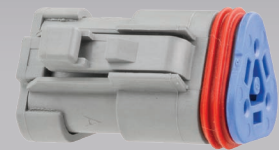


DT04-4P-RT03



DTM06-2S-EP10

DT06-3S-P006



DT04-3P-P006

IP68

IP6K9K

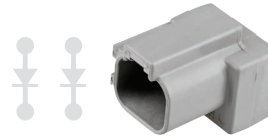
Housing : Thermoplastic
 Seal : Silicone Rubber
 Wedglock : Thermoplastic
 Shock : 50G
 Vibration : 20G rms 10 – 2000Hz
 Ingress Protection : IP68, IP6K9K



DT04-2P-RT01



DT04-2P-RT02



DT04-4P-RT03



DT04-2P-RT06

Diodes – Unidirectional

Part No.	Suits	Style	Colour	Diode	Peak Reverse Volts	Peak Forward Volts	Avg. Forward Current (A)
DT04-2P-RT01	DT Series	Receptacle	Black	MUR460	600 max.	1.28 max.	4.0 max.
DT04-2P-RT02	DT Series	Receptacle	Black	1N5625GP	400 max.	1.0 max.	3.0 max.
DT04-4P-RT03	DT Series	Receptacle	Grey	2x MUR460	600 max.	1.28 max.	4.0 max.

Diodes – Bidirectional NEW

Part No.	Suits	Style	Colour	Diode	Reverse Stand off Voltage	Breakdown Voltage	Clamping Voltage	Peak Pulse Current (A)
DT04-2P-RT06	DT Series	Receptacle	Green	T.V.S 1.5KE130CA	111	130 (±5V)	179 max.	8.5 max.



DTM06-2S-EP10



DT04-3P-P006



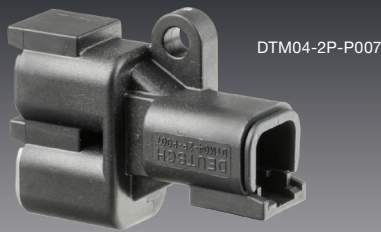
DT06-3S-P006

Resistors

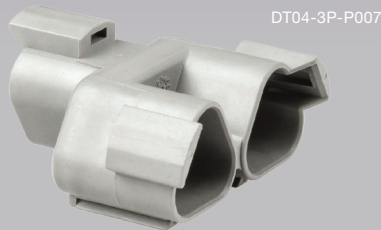
Part No.	Suits	Style	Colour	Ohms	Watts	Tolerance
DTM06-2S-EP10	DTM Series	Plug	Black	120	0.4 min.	5%
DT04-3P-P006	DT Series	Receptacle	Grey	120	0.4 min.	10%
DT06-3S-P006	DT Series	Plug	Grey	120	0.4 min.	10%

Resistors include wedglock.





DT04-3P-P006

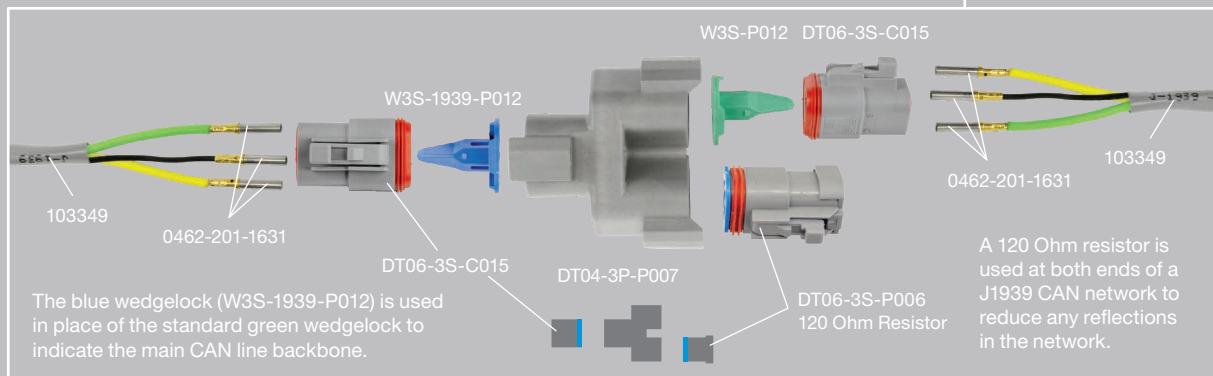
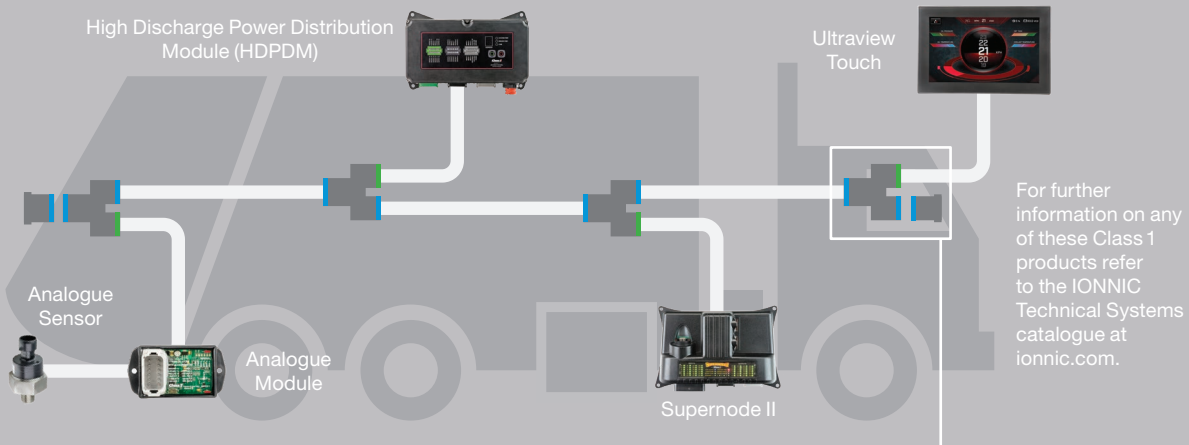


- Environmentally sealed – IP68, IP6K9K, when installed to manufacturer's specifications.
- Multiple housing options available.
- Latched mating.
- Wedgelocks ensure contact alignment and retention.

Housing :	Thermoplastic
Seal :	Silicone Rubber
Wedglock :	Thermoplastic
Vibration :	20G rms 10 – 2000Hz
Approvals :	20mm Flame Test per Standard UL-94
Ingress Protection :	IP68, IP6K9K
Operating Temperature :	-55°C to 125°C

CAN (Controller Area Networks)

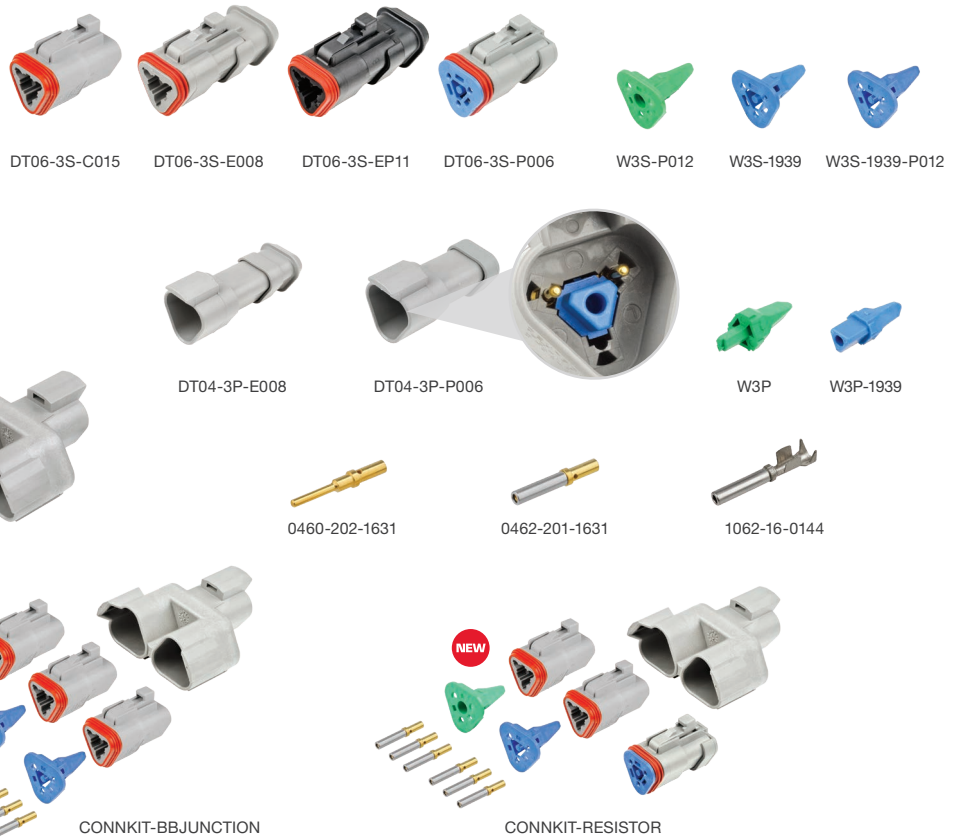
CAN, or Controller Area Networks, are multiplexed control systems. Multiplexing allows multiple data signals to travel on the same wires, integrating separate electronic systems and applications to a single point of control and monitoring system.



J1939/11

J1939/11 is a 3-wire system that uses the TE DEUTSCH DT series connectors primarily for truck and bus. The DT series accepts size 16 contacts.

Connector options include in-line, bulkhead, Y splitter, and terminating resistors.



CAN Connectors – J1939/11 – Common Components

Part No.	Description	Cavities/Circuits
DT06-3S-C015	DT Series – Plug – Reduced diameter seal (E Seal)	3
DT06-3S-E008	DT Series – Plug – Heat shrink adaptor	3
DT06-3S-EP11	DT Series – Plug – Heat shrink adaptor – Black. Requires W3S-P012	3
DT06-3S-P006	DT Series – Plug – 120 Ohm Resistor. Includes wedgelock & contacts	3
W3S-P012	DT Series – Wedgelock – Plug – Green – Enhanced seal retention	3
W3S-1939	DT Series – Wedgelock – Plug – Blue	3
W3S-1939-P012	DT Series – Wedgelock – Plug – Blue – Enhanced seal retention	3
DT04-3P-E008	DT Series – Receptacle – Heat shrink adaptor	3
DT04-3P-P006	DT Series – Receptacle – 120 Ohm Resistor. Includes wedgelock & contacts	3
W3P	DT Series – Wedgelock – Receptacle – Green	3
W3P-1939	DT Series – Wedgelock – Receptacle – Blue	3
DT04-3P-P007	DT Series – Receptacle Y Piece. Includes wedgelocks & contacts	3
0460-202-1631	Contact – Pin – Solid – Gold-plated – Size 16	
0462-201-1631	Contact – Socket – Solid – Gold-plated – Size 16	
1062-16-0144	Contact – Socket – F-Crimp – Gold-plated – Size 16	
CONNKIT-BBJUNCTION NEW	Connection Kit – CAN Splice. Used for splitting CAN Backbone	
Kit contents:		
1 x Receptacle – DT Series Y Piece (DT04-3P-P007)	9 x Contact – Socket – Gold-Plated (0462-201-1631)	2 x Wedgelock – Blue (W3S-1939-P012)
3 x Plug – DT Series – 3 Circuit (DT06-3S-C015)		1 x Wedgelock – Green (W3S-P012)
CONNKIT-RESISTOR NEW	Connection Kit – CAN Splice with Resistor. Used for terminated CAN Backbone	
Kit contents:		
1 x Receptacle – DT Series Y Piece (DT04-3P-P007)	1 x DT Series 120 Ohm Resistor (DT06-3S-P006)	1 x Wedgelock – Blue (W3S-1939-P012)
2 x Plug – DT Series – 3 Circuit (DT06-3S-C015)	6 x Contact – Socket – Gold-Plated (0462-201-1631)	1 x Wedgelock – Green (W3S-P012)



J1939/13

J1939/13 is a system that uses the TE DEUTSCH HD10 series connectors for on-board diagnostics. The HD10 series accepts size 16 contacts.



HD10-9-1939PE



HD16-9-1939SE



0460-202-1631



0462-201-1631



1062-16-0144

CAN Connectors – J1939/13 – Common Components

Part No.	Description	Cavities
HD10-9-1939PE	HD10 Series – Receptacle. Threaded rear – Black	9
HD16-9-1939SE	HD10 Series – Plug. Threaded rear – Black	9
0460-202-1631	Contact – Pin – Solid – Gold-plated – Size 16	
0462-201-1631	Contact – Socket – Solid – Gold-plated – Size 16	
1062-16-0144	Contact – Socket – F-Crimp – Gold-plated – Size 16	

J1939/15

SAE J1939/15 defines the requirements for reduced physical layer 2-wire CAN systems consisting of an unshielded twisted pair of wires.



CAN Connectors – J1939/15 – Common Components

Part No.	Description	Cavities/Circuits
DTM06-2S-EP10	DTM Series – Plug – 120 Ohm Resistor – Black. Includes wedgelock & contacts	2
DTM06-2S-P006	DTM Series – Plug – 120 Ohm Resistor. Includes wedgelock & contacts	2
DTM04-2P-P006	DTM Series – Receptacle – 120 Ohm Resistor. Includes wedgelock & contacts	2
DTM06-2S-E005	DTM Series – Plug – End cap – Black	2
WM-2S	DTM Series – Wedgelock – Plug – Orange	2
WM-2SB	DTM Series – Wedgelock – Plug – Black	2
DTM04-2P-P007	DTM Series – Receptacle Y Piece – Black. Includes wedgelock & contacts	2
0460-202-2031	Contact – Pin – Solid – Gold-plated – Size 20	
0460-010-2031	Contact – Pin – Solid – Gold-plated – Size 20 – Purple Band	
1060-20-0144	Contact – Pin – F-Crimp – Gold-plated – Size 20	
0462-201-2031	Contact – Socket – Solid – Gold-plated – Size 20	
0462-005-2031	Contact – Socket – Solid – Gold-plated – Size 20 – Purple Band	
1062-20-0144	Contact – Socket – F-Crimp – Gold-plated – Size 20	
DTM2-J1939-KIT	DTM Series – 120 Ohm Resistor Kit Kit contents: 1 x Receptacle – DTM Series – 2 Circuit (DTM04-2P) 1 x Wedgelock – Orange (WM-2P) 1 x DTM Series 120 Ohm Resistor (DTM06-2S-P006) 2 x Contact – Pin – Gold-Plated (0460-202-2031) 1 x Mounting Clip (1011-026-0205)	





- Breakaway coupling specifically designed to prevent damage to vehicle wiring and/or the attached implement by safely disconnecting and separating from vehicle in the event of an operator driving away without disconnecting beforehand.
- Dust cap suits all shell size 24 HD30 and HDP20 series connectors.
- Ideal for use in agricultural equipment as well as the truck, bus, mining and construction industry.
- Environmentally sealed – IP68, IP6K9K, when installed to manufacturer's specifications.
- Resistant to most fluids in industrial applications.



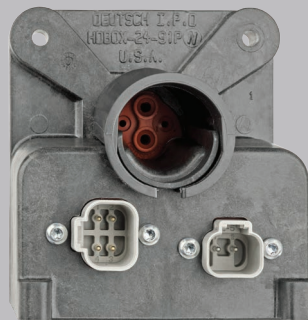
Housing :	HD30 Series	Aluminium
	DT Series	Thermoplastic
Seal :		Silicone Rubber
Shock :		50G
Vibration :		20G rms 10 – 2000Hz
Approvals :		20mm Flame Test per Standard UL-94
Ingress Protection :		IP68, IP6K9K
Operating Temperature :		-55°C to 125°C

HDBOX-24-91PN – Breakaway CAN Termination Assembly

Originally designed for agricultural applications, the TE DEUTSCH HDBOX-24-91PN Breakaway CAN Termination Assembly creates a communication pathway between an on-board CAN system and the electronic components on an attached implement.

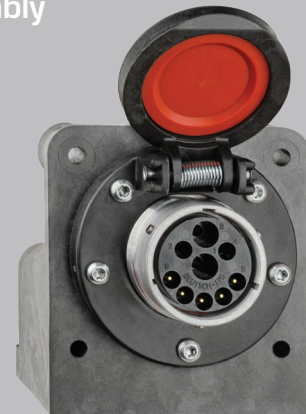
The HDBox, which holds two DT13 connectors and an HD30 Series receptacle, mounts on the vehicle and mates with an HD30 Series plug connector featuring a breakaway coupling ring.

TE DEUTSCH breakaway couplings are designed to prevent damage to the CAN wiring of the vehicle and/or the attached implement by disconnecting and separating from the vehicle in the event of an operator driving away without disconnecting beforehand.



Houses
1 x DT13-2P, 1 x DT13-4P

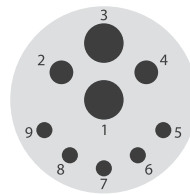
Mates with
DT06-2S-EP06
DT06-4S-EP06



Houses
1 x HD34-24-91PN
Mates with
HDB36-24-91SN



HDBOX-24-91PN



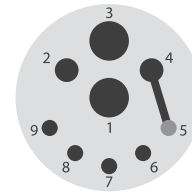
2 x size 8, 2 x size 12,
5 x size 16



HD34-24-91PN



HD34-24-91PN-059



Circuits 4 & 5 are bridged.
Circuit 5 is occupied with a size 16
contact and sealed with a cavity plug



HDB36-24-91SN



HDB36-24-91SN-059



5004-001-2405



DT06-2S-EP06



DT06-4S-EP06



W2S-P012



W4S-P012



0460-204-08141



0460-204-12141



0460-202-1631



0462-203-08141



0462-203-12141



0462-201-1631

HD30 Breakaway

Part No.	Description	Cavities
HDBOX-24-91PN	Breakaway CAN Termination Assembly	15
HD34-24-91PN NEW	HD30 Series – Receptacle. Breakaway coupling	9
HD34-24-91PN-059 NEW	HD30 Series – Receptacle. Breakaway coupling incorporating strain relief	9
HDB36-24-91SN	HD30 Series – Plug. Breakaway coupling. Circuits 4 & 5 are bridged	9*
HDB36-24-91SN-059	HD30 Series – Plug. Breakaway coupling incorporating strain relief. Circuits 4 & 5 are bridged	9*
* Circuit 5 is occupied with a non-removable size 16 contact and sealed with a cavity plug		
5004-001-2405 NEW	Dust cap suits shell size 24 HD34/HDP24 receptacles. Includes gasket	
DT06-4S-EP06	DT Series – Plug – Enhanced Seal Retention and End Cap – Black	4
DT06-2S-EP06	DT Series – Plug – Enhanced Seal Retention and End Cap – Black	2
W2S-P012	DT Series – Wedgelock – Plug – Green	2
W4S-P012	DT Series – Wedgelock – Plug – Green	4
0460-204-08141	Contact – Pin – Solid – Size 8	
0460-204-12141	Contact – Pin – Solid – Size 12	
0460-202-1631	Contact – Pin – Solid – Gold-plated – Size 16	
0462-203-08141	Contact – Socket – Solid – Size 8	
0462-203-12141	Contact – Socket – Solid – Size 12	
0462-201-1631	Contact – Socket – Solid – Gold-plated – Size 16	

