



Miscellanies

DIN/Cigar Connectors 104

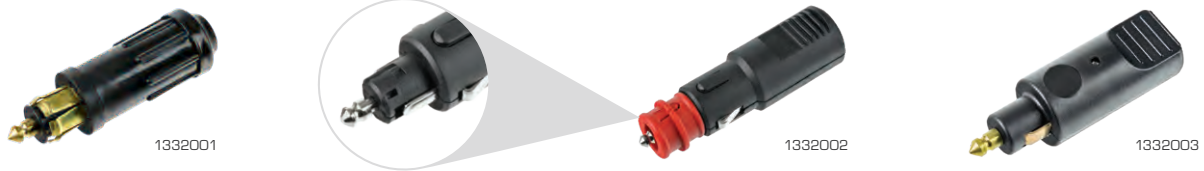
Multi Pin Connectors 106

Miscellanies

DIN/Cigar Connectors



- DIN and universal cigar size available.
- Brass contacts for greater conductivity.
- 1332002 incorporates strain relief.
- 1332002 removable cap allows both DIN and cigar connections.



DIN/Cigar Plugs

Part No.	Current Rating (A)	Type	Housing	Notes
1332001	12	DIN	Thermoplastic	
1332002	12	Cigar/DIN	Thermoplastic	Incorporates strain relief
1332003	8	DIN	Thermoplastic	



Adaptors & Extension Cables

Part No.	Description	Current Rating (A)	Cable (cm)	Housing
1334001	Cigar/DIN plug to cigar socket. 6-24V	2 x 5	20	Thermoplastic
1334002	DIN plug to cigar socket	12	—	Thermoplastic
1334003	Battery terminal clips to cigar socket	8	95	Thermoplastic
1334004	Cigar/DIN plug to DIN socket	8	385	Thermoplastic
1334005	Cigar/DIN plug to cigar socket	8	60 – 300	Thermoplastic



DIN/Cigar Sockets

Part No.	Current Rating (A)	Type	Voltage	Cap Style	Terminal Style	Housing	Mounting ϕ (mm)
1331001	12	DIN	—	Spring Loaded	Parallel	Brass	18
1331002	12	DIN	—	—	Parallel	Brass	18
1331003	12	DIN	—	Press Fit	Parallel	Brass	18
1331004	12	DIN	—	Spring Loaded	Offset	Brass	18
1331011	12	DIN	—	—	Parallel	Thermoplastic	18
1331005	12	DIN	—	—	Screw	Aluminium	—
1331006	16 total	DIN	—	—	Parallel	Thermoplastic	—
1331007	16	DIN	—	—	Parallel	Thermoplastic	—
1331008	15	Cigar	—	Press Fit	Offset	Stainless Steel	28
1331009	—	Cigar	12	—	Offset	Stainless Steel	28
1331010	20	Cigar	—	Press Fit	Offset	Stainless Steel	28



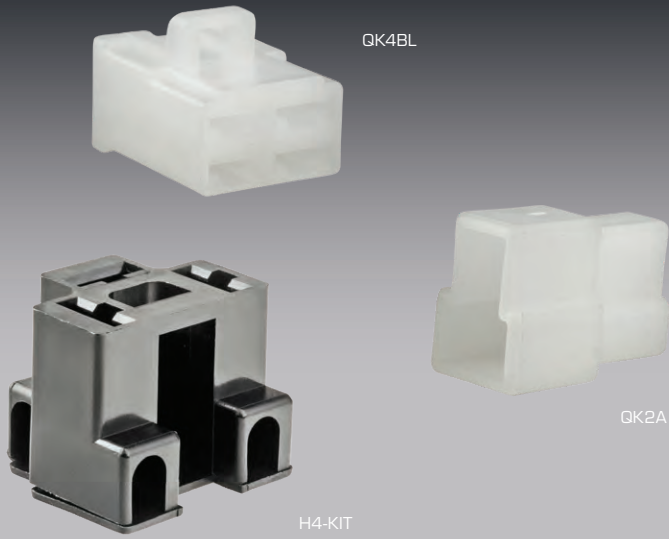
Sockets & Mounts

Part No.	Description	Voltage	Output
1336000	Volt Meter. Displays 6–29.9V	12 – 24	—
1336001	Socket – Power (cigar)	12 – 24	16A
1336002	Socket – Engel	12 – 24	15A
1336003	Socket – 5V Twin USB	12 – 24	2 x 2.1A
1336M01	Surface Mount – Single		
1336M02	Surface Mount – Double		
1336M03	Surface Mount – Triple		
1336M05	Panel Mount – Double		
1336M06	Panel Mount – Single		
1336010	Plug & Socket – 2 Pin. S/Steel	12 – 24	20A



Miscellanies

Multi Pin Connectors



- All connectors are polarised to prevent mismatching.
- QL connectors feature a positive locking latch which automatically engages on mating.
- QK connectors feature panel mounting tabs.
- Ideal for low voltage power supply needs.
- Universal EFI connector kit.



QL Series Kits – Kits

Cavities	1	2	Kit contents
Part No.	QL1	QL2	1 x Receptacle 1 x Plug Tabs and receptacles according to cavities



QL Series – Connectors – 8mm

	1 Cavity	2 Cavities
Mating Latch	Yes	Yes
Receptacles	QL1A/10	QL2A/10
Plugs	QL1B/10	QL2B/10

Supplied in packs of 10.



QL Series – Contacts – 8mm

Pack Qty – 100	Blade Size (mm)	Type	Wire Size (mm²)
66047BL2/100	8	Receptacle	3.0 – 5.0
66057BL2/100	8	Tab	3.0 – 5.0



QK Series Kits – Kits

Cavities	1	2	3	4	6	8	Kit contents 1 x Receptacle 1 x Plug Tabs and receptacles according to cavities
Part No.	QK1	QK2	QK3	QK4	QK6	QK8	



QK1ASL



QK1B



QK6AL



QK8BLT

QK Series – Connectors – 6.3mm

Mating Latch	1 Cavity		2 Cavities		3 Cavities	4 Cavities	6 Cavities	8 Cavities
	Yes	No	Yes	No	Yes	Yes	Yes	Yes
Receptacles	QK1ASL/10	QK1A/10	QK2ASL/10	QK2A/10	QK3AL/10	QK4AL/10	QK6AL/10	QK8AL/10
Plugs	QK1BSL/10*	QK1B/10	QK2BSL/10	QK2B/10	QK3BL/10	QK4BL/10	QK6BLT/10	QK8BLT/10

Supplied in packs of 10.

* **QK1BSL/10** housing requires **605001BL2** receptacle.



604501BL2



604502BL2



605001BL2



605501BL2, 605502BL2

QK Series – Contacts – 6.3mm

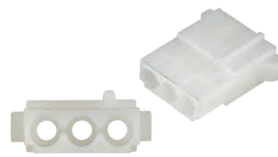
Pack Qty – 100	Blade Size (mm)	Type	Wire Size (mm ²)	Locking Tab
604501BL2/100	6.3	Receptacle	2.0 – 3.0	Yes
604502BL2/100	6.3	Receptacle	1.0 – 2.0	Yes
605001BL2/100	6.3	Receptacle	1.0 – 1.5	Yes
605501BL2/100	6.3	Tab	2.0 – 3.0	Yes
605502BL2/100	6.3	Tab	1.5 – 2.0	Yes



Miscellanies



1-480305-0



1-480303-0

TE MATE-N-LOK – Connectors

Part No.	Type	Cavities
1-480305-0	Receptacle	3
1-480303-0	Plug	3



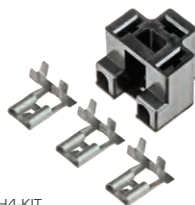
163304-2



163305-2

TE MATE-N-LOK – Contacts

Pack Qty – 10	Type	Wire Size (mm ²)
163304-2/10	Socket	0.5 – 1.0
163305-2/10	Pin	0.5 – 1.0



H4-KIT



3029

H4 Sealed Beam Connectors

Part No.	Description	Wire Size (mm ²)
H4-KIT	Kit contains 1 x Connector, 3 x 8mm Flag Contacts – Tin-plated	2.1
3029	Pre-wired. Bronze contacts. 200mm wire length	



Temperature Sender Kit

Pack Qty - 10	Description	Blade Size (mm)	Wire Size (mm ²)
TSKIT/10	Kits contain 1 x Connector, 1 x 6.3mm Contact	6.3	0.8 - 1.5



EFI Connector Kit

Part No.	Description	Kit Contents
EFI-2-QR	Quick release connector kit suiting injectors & vehicle sensors	1 x Connector housing 1 x Rubber Extension 2 x Sockets (925590-2)



Crimping Tools – QK & QL Contacts

Part No.	Description	Crimp Range (mm ²)
HT-4220	—	0.2–0.3, 0.3–0.5, 0.5–0.8, 0.8–1.3, 1.3–2.0
HT-4560	Ratcheting	0.5–1, 1.5–2.5, 4–6

